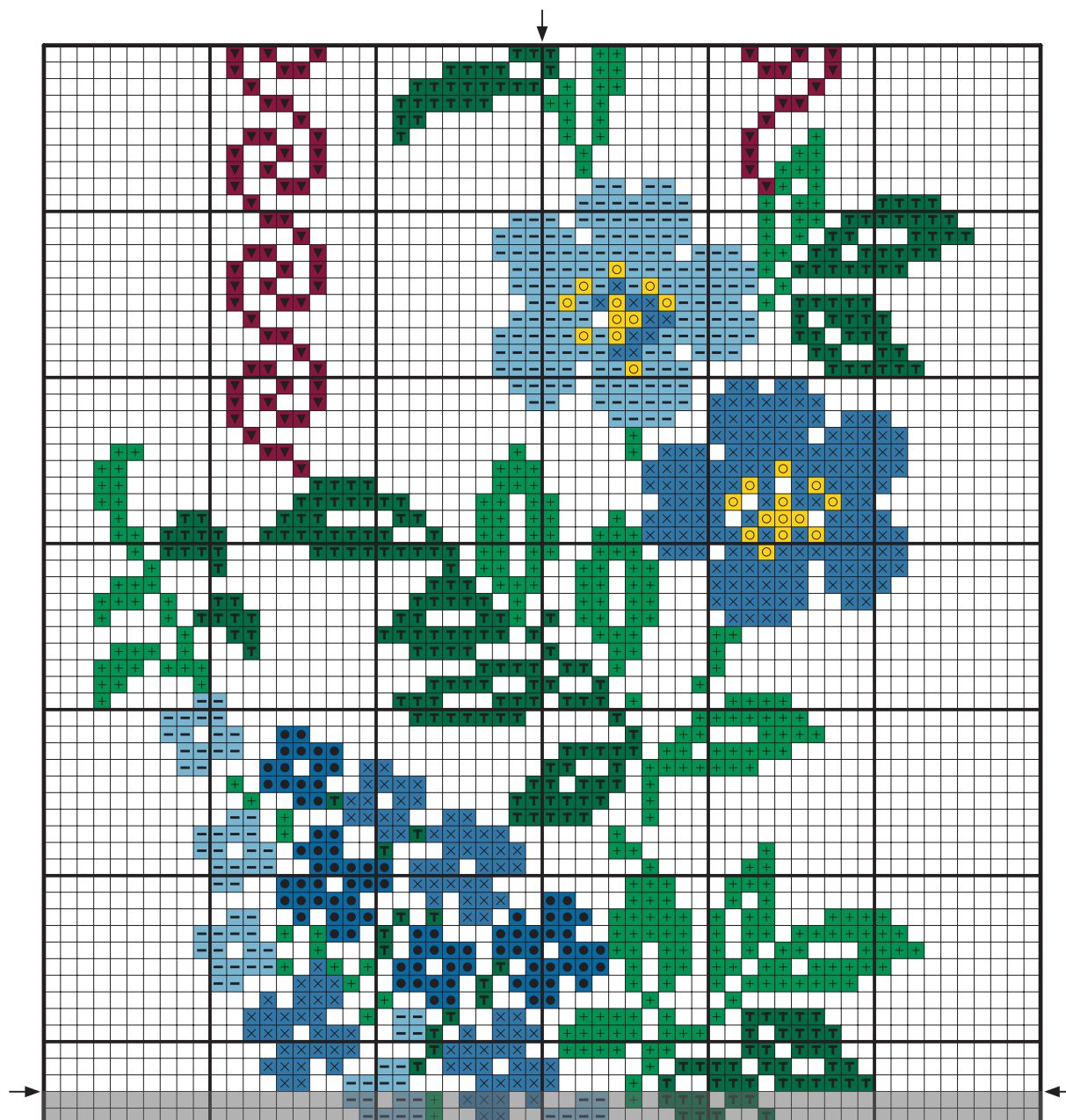


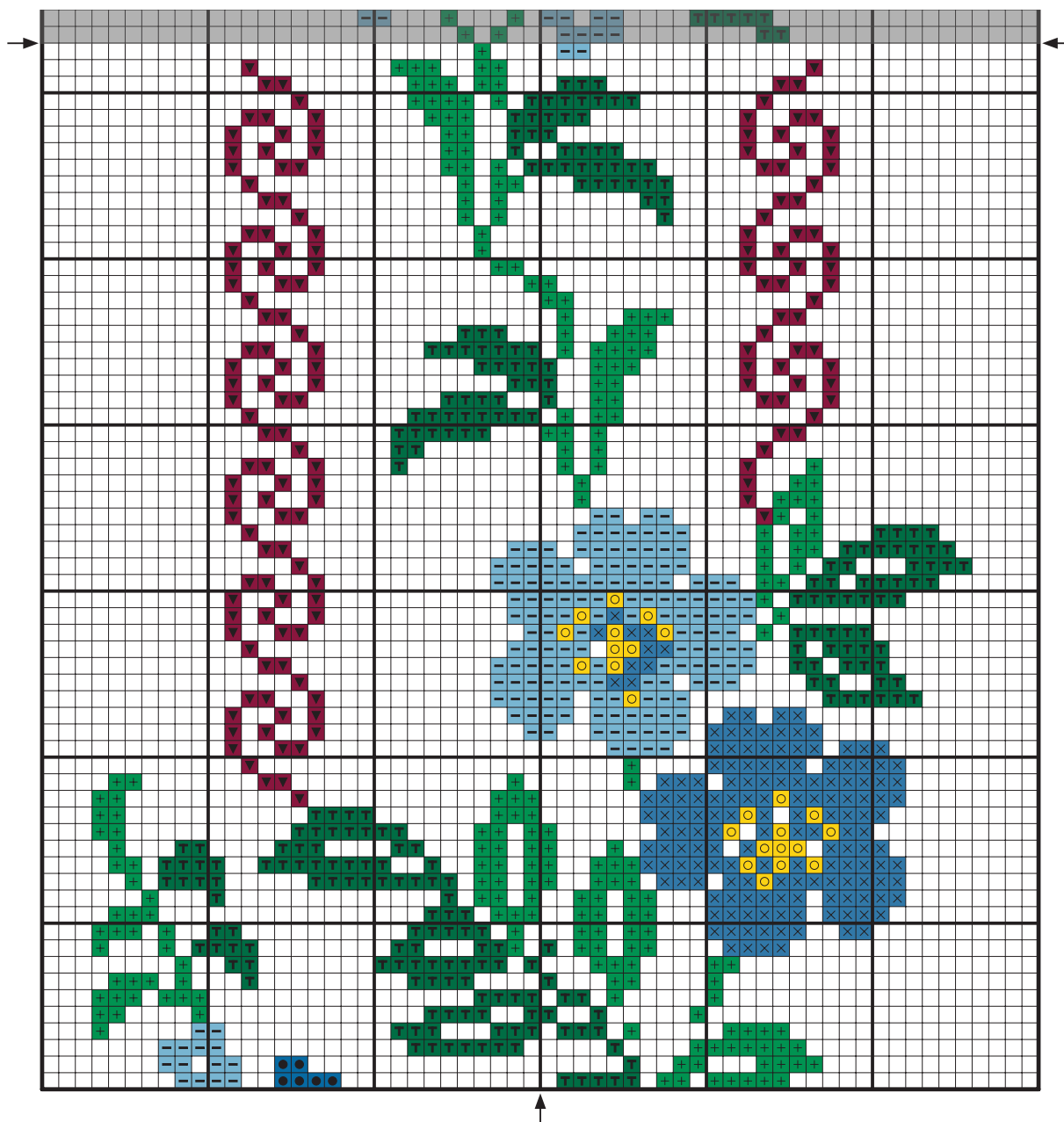
Blue Climbing Flower / Fleur grimpante bleue

Coloured Cross Stitch Chart with Backstitch



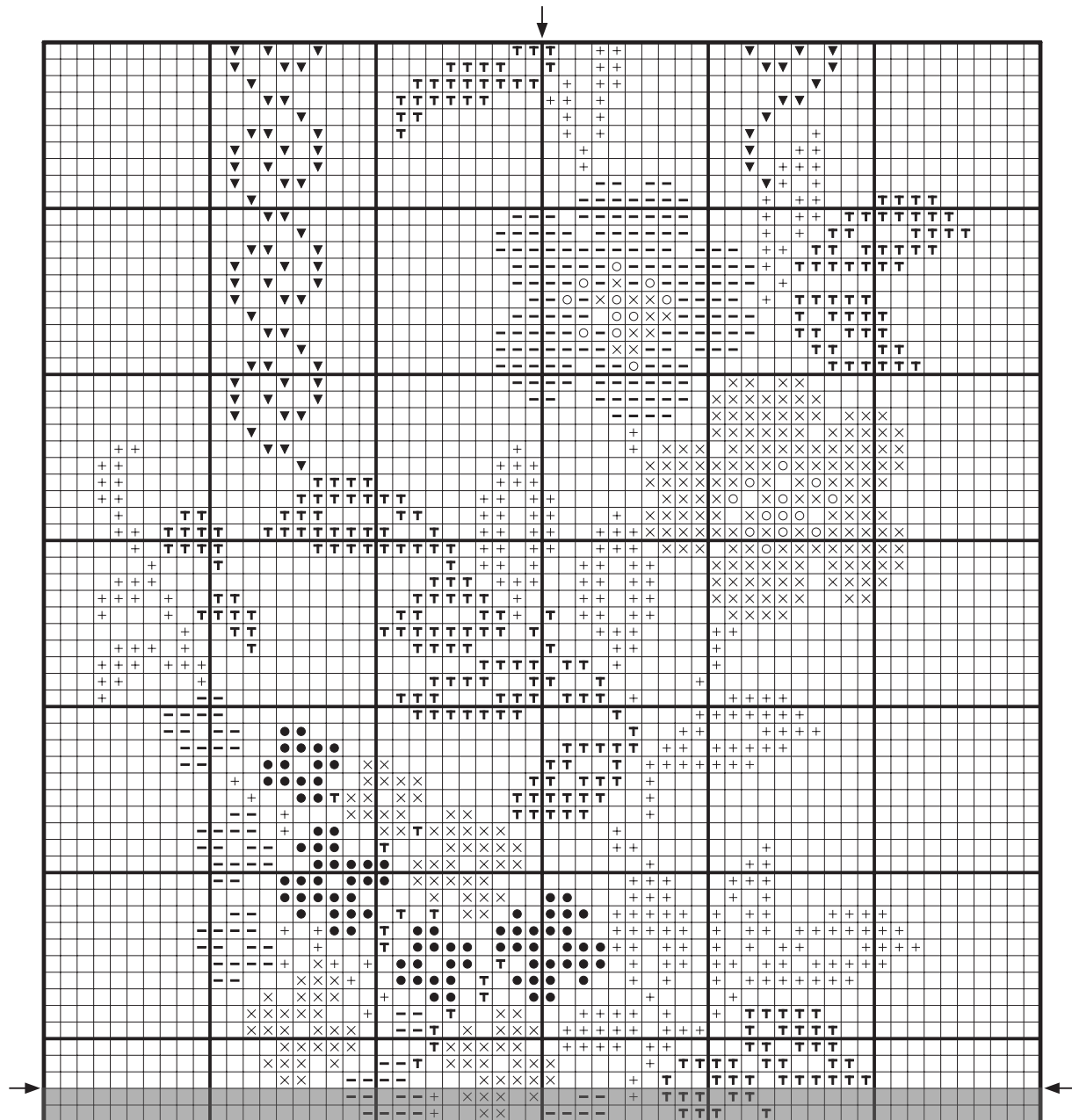
Blue Climbing Flower / Fleur grimpante bleue

Coloured Cross Stitch Chart with Backstitch



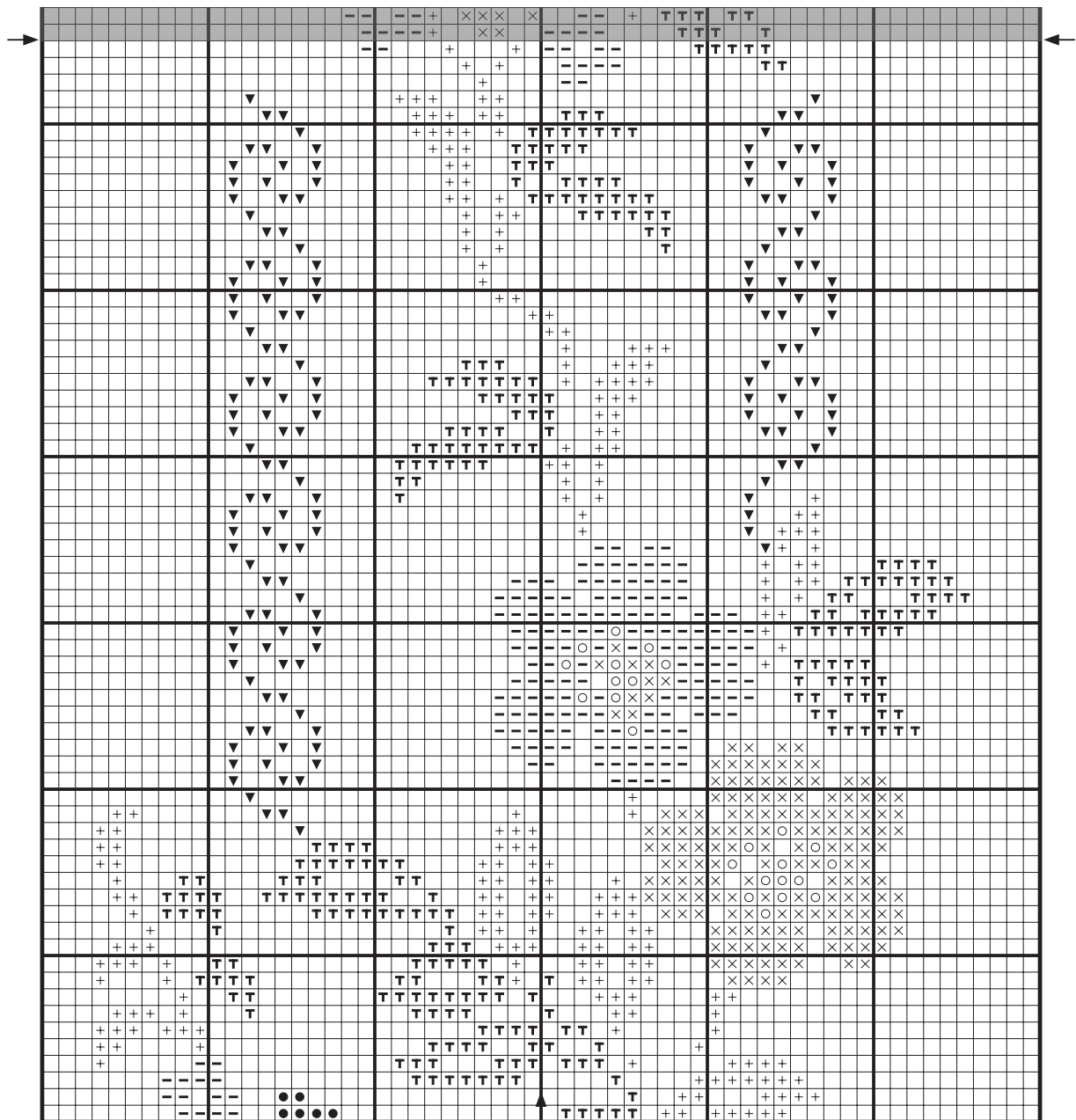
Blue Climbing Flower / Fleur grimpante bleue

Cross Stitch Chart



Blue Climbing Flower / Fleur grimpante bleue

Cross Stitch Chart



Blue Climbing Flower / Fleur grimpante bleue

Getting Started



Tool Kit

DMC Mouliné Special embroidery thread 117MC

Cross stitch fabric / aida

Cross stitch needle

Embroidery hoop (optional)

Scissors








Design size 23,5 x 11 cm / 9,5 x 4,5 ”

The size of your design depends on the cross stitch fabric you choose. The higher the fabric's "count" (ie number of cross stitches per inch), the smaller the stitches and therefore your design. We recommend beginners start with 14 count aida (the most common cross stitch fabric), which is what we have based our design size on.

Stitches and Colours You'll Use

Cross Stitch  Use 2 strands 

Mouliné Special Embroidery Thread

Symbol	Colour	N° skeins*	Symbol	Colour	N° skeins*
	334	x 1		909	x 1
	3325	x 1		498	x 1
	322	x 1		307	x 1
	911	x 1			

* Based on stitching with the number of strands shown above, onto 14 count aida.